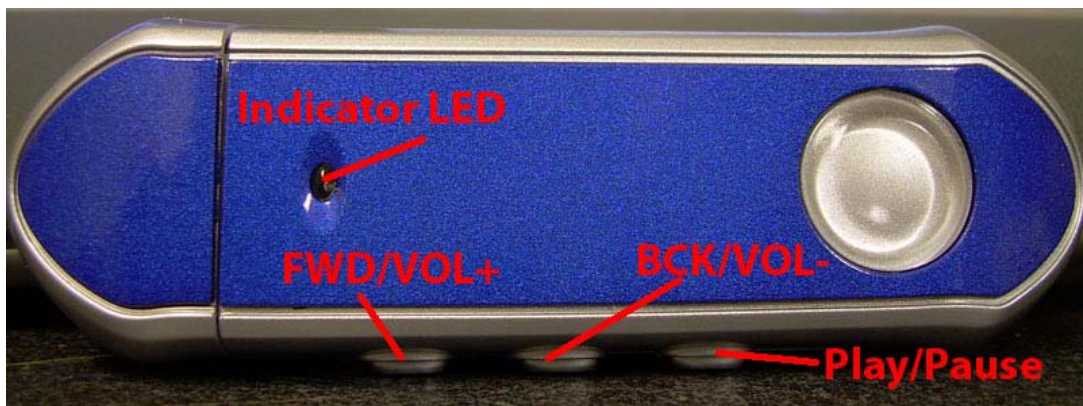


# INDIGO

## User's Manual

### Interface



1. INDICATOR LED- Indicates whether the player is on and playing
2. FWD/VOL+ - skips to next song, increases volume
3. BCK/VOL- - skips to previous song, decreases volume
4. Play/Pause- Plays and pauses songs, also powers unit on/off

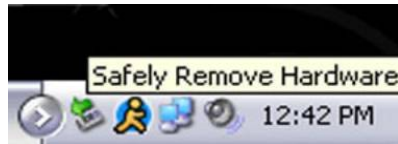
## **Function**

*NOTE-When the unit is powered on, the indicator LED will glow purple. When the unit is playing a file, the indicator LED will flash between red and purple*

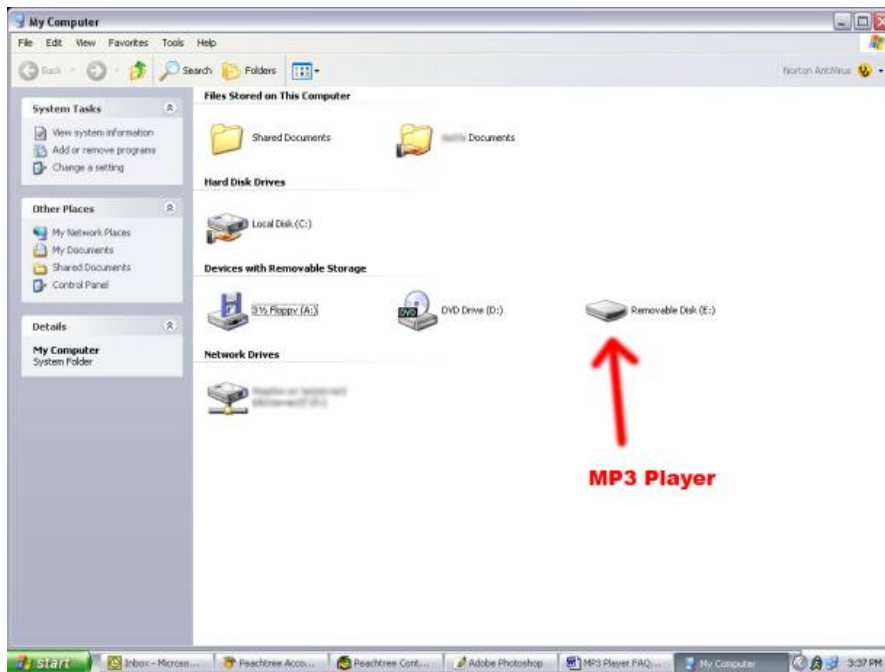
- Insert your AAA battery into the Indigo player.
- Insert your earbuds to the player.
- Press and hold the Play/Pause button for three seconds to power the unit on. The indicator light on the Indigo will glow purple.
- Briefly press the Play/Pause button to begin playing a file. Briefly pressing the Play/Pause button again will pause the song.
- Press and hold the FWD/VOL+ button to increase the volume.
- Press and hold the BCK/VOL- button to decrease the volume.
- If you press and hold the Play/Pause button to power off your Indigo while playing a song, the Indigo will remember what part of which song you were on and will resume playing that song when powered back on.

## Connecting to your PC and Transferring files

1. Connect the MP3 player to a working USB port
2. When the unit is connected to your computer, it will create a gray and green icon in the system tray (lower right hand corner of your desktop). The icon will be called safely remove hardware.



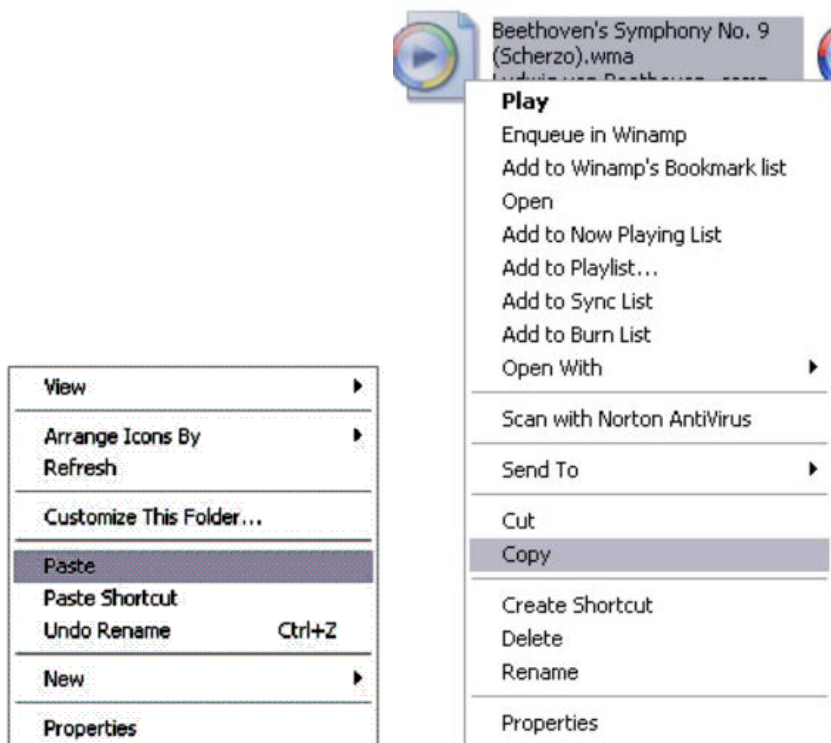
3. Go to the “My Computer” section of your computer. In there you will find a section called “devices with removable storage”



4. Locate the drive created by the unit, generally just called Removable Disk, with a letter in Parenthesis. Drive letters vary depending on your system configuration
5. Open the drive by both double left clicking on the drive itself, or by right clicking, and left clicking on the open option on the menu



6. Once you have located the song files, you can right click on the song itself, and select “copy”. Open the removable disk drive, right click on in the empty space, and select Paste. This will transfer the song on to your MP3 player.



7. Repeat step 6 for as many songs as you want to copy on to the unit.

## Troubleshooting

For Troubleshooting and Frequently asked Questions, please visit:

[www.machspeer.com/tech/FAQINDIGO/indigofaq.htm](http://www.machspeer.com/tech/FAQINDIGO/indigofaq.htm)

## Specifications

Outside Dimensions	89.60mm(L)×28.40(W)×18.75mm(H)	
Weight	25.0g(without battery)	
Computer interface	Full speed USB2.0 (Read 1000KB,Write 800KB)	
Memory size	128M-2GB	
Battery lifetime	up to 6 hours	
MP3,WMA	Earphone max power	(L)10mW+(R)10mW(32Ohm)
	MP3 bit rate	32 bps-320 bps
	WMA bit rate	64 bps-192 bps
	Frequency response	20Hz-20KHz
	Signal to Noise ratio	85dB
Music formats supported	MP3,WMA	
Temperature range	-5~40 Celsius Degree	
Operating system	Windows98SE/ME/2000/XP/Mac OS 10,Linux2.4.2	
Packing contents	MP3 Player, USB cable, CD driver, User's manual, Warranty card, Earphone, 1xAAA battery	

