

CarTunes MAX

User's Manual

Foreword

To get to know your CarTunes, please carefully read through this manual in its entirety. While writing this manual, we aim to be as accurate as possible, providing you with reliable information. However, if you find any mistakes or omissions, please feel free to contact us with your comments. If you have any problems while using this product, please contact our technical department at mssupport@machspeed.com. We appreciate your support and cooperation.

Mach Speed Technologies is not responsible for any loss of personal data or damage caused by a malfunction of the hardware, firmware, physical damage, improper replacement of the battery as well as improper working conditions. To avoid the loss of your data, please back files up on your computer as often as possible. As Firmware updates are released for this CarTunes, some functions and features in this manual may no longer apply to the CarTunes.

- The information contained in this manual is subject to changes without any prior notices.
- The information in this manual is protected by copyright. Do not copy or reproduce any part of this manual without prior written permission from Mach Speed Technologies.

NOTE: This equipment has been tested and found to comply with the limits for Class B Digital device, pursuant to part 15 of the FCC rules. These limits are designed to provide reasonable protection against harmful interference in a residential installation. This equipment generates uses and can radiate radio frequency energy and, if not installed and used in accordance with the instructions, may cause harmful interference to radio or television reception, which can be determined by turning the equipment off and on, the user is encouraged to try to correct the interference by one or more of the following measures:

- Reorient or relocate the receiving antenna.
- Increase the separation between the equipment and receiver.
- Connect the equipment to an outlet on a circuit different from that to which the receiver is connected.
- Consult the dealer or an experienced radio/TV technician for help.

Safety Precautions

- Avoid using the CarTunes in extreme hot or cold conditions.
- Avoid dropping the CarTunes or bumping it hard.
- Be sure to always eject the CarTunes from your computer before removing it.
- Avoid using this CarTunes while driving.

Appearance and key description




Basic Operation

1. Simple operation

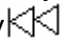
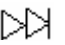
Insert the machine into your car's 12v cigarette lighter socket and connect any external media drive, or

line in cable. The CarTunes will automatically power on and begin to play. If you do not connect external media, the CarTunes will play the files loaded on its flash memory. Tune your car radio to the station corresponding with the CarTunes' displayed station to listen.



Press the Play/Pause  key to make the music pause or play;

Press **-A** or **B+** key to select the last frequency or the next frequency;

Press the PREV  or NEXT  key to select the previous track or the Next track.

Note: 1) Please ensure that you set the CarTunes frequency to a station not used locally, or you will experience interference while listening.

2) Ensure that you have your car's radio tuned to the same frequency as listed on the CarTunes

2. Using a LINE-IN connection

1. Insert the machine to your car's cigarette lighter socket.

2. Use the LINE-IN connector to connect your CarTunes and external MP3 CarTunes, using the smaller of the two connections for the CarTunes and the larger of the two connections to the MP3 CarTunes' line out or headphone jack. When your CarTunes detects the MP3 CarTunes, it will automatically begin transmitting the audio received from it.



Note:

1) When using this function, the CarTunes will be transmitting the audio, but the audio files will come from the MP3 CarTunes.

2) When using this function, the play/pause, and track navigation features are controlled by the MP3

CarTunes. The play/pause and track navigation buttons on your CarTunes will be non functional.

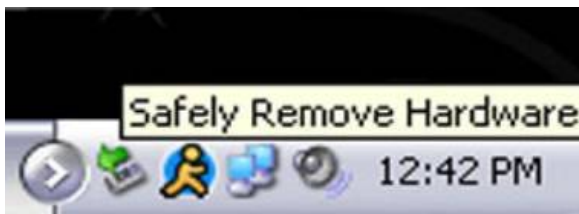
3) If the LINE-IN connection is disconnected, your CarTunes will automatically begin transmitting from its internal memory again, and the play/pause and track navigation buttons will be functional again.

Transferring songs to the CarTunes/USB Mode

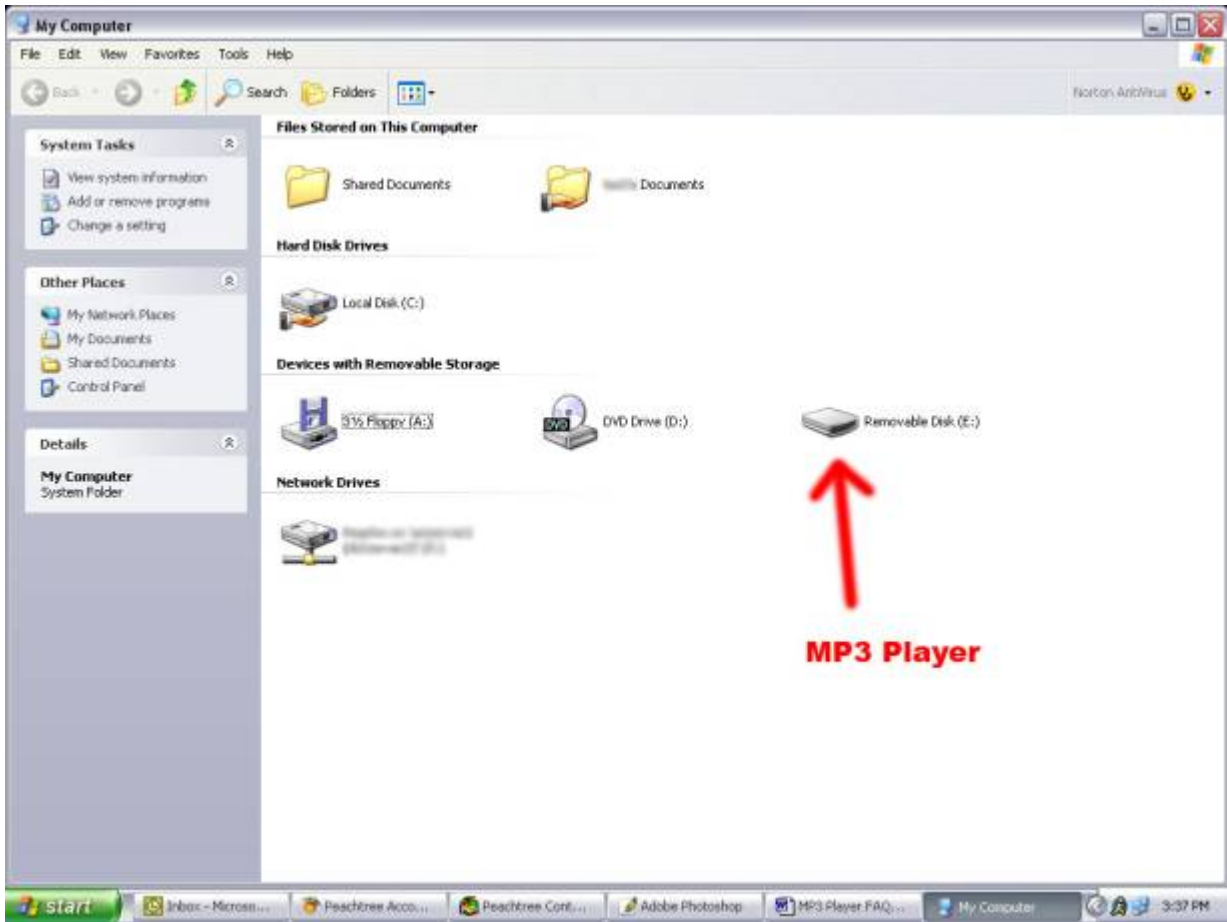
There are two methods of transferring songs to the MP3 CarTunes: Using Windows Media CarTunes, and the copy and paste method.

Copy and paste:

1. Connect the MP3 CarTunes to a working USB port
2. When the CarTunes is connected to your computer, it will create a gray and green icon in the system tray (lower right hand corner of your desktop). The icon will be called "Safely Remove Hardware".



3. Go to the "My Computer" section of your computer. In there you will find a section called "Devices with Removable Storage".

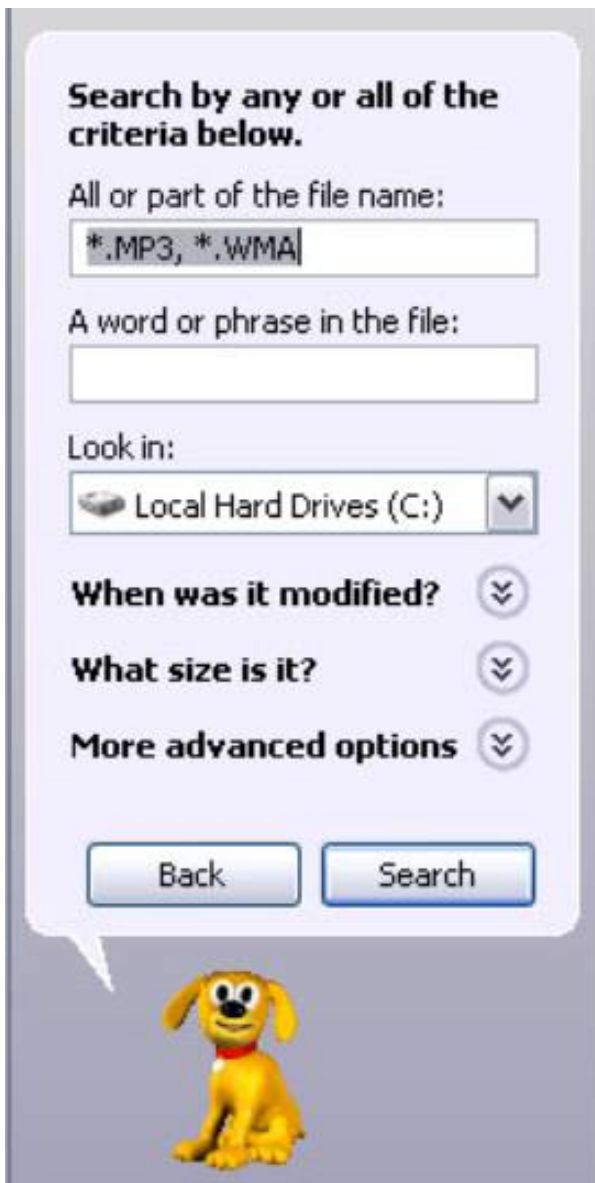


4. Locate the drive created by the unit, generally just called “Removable Disk”, with a letter in parenthesis. Drive letters vary depending on your system configuration. Open the drive by either double left clicking on the drive itself, or by right clicking on the drive, then left clicking

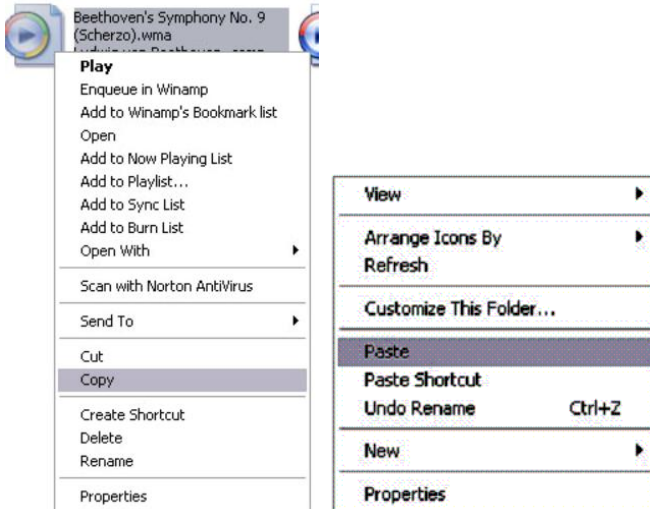


on the “Open” option on the menu.

6. Locate the music stored on your computer. Generally this is stored in the “My Music” folder of your computer. NOTE: if you are unable to locate the music on your computer, click on start, search, files and folders, then search for “*.MP3, *.WMA”.



7. Once you have located the song files, you can right click on the song itself, and select “Copy”. Open the disk drive, right click on the empty space, and select “Paste”. This will transfer the song on to your CarTunes



8. Repeat step 7 for as many songs as you want to copy on to the unit.

Using Windows Media CarTunes

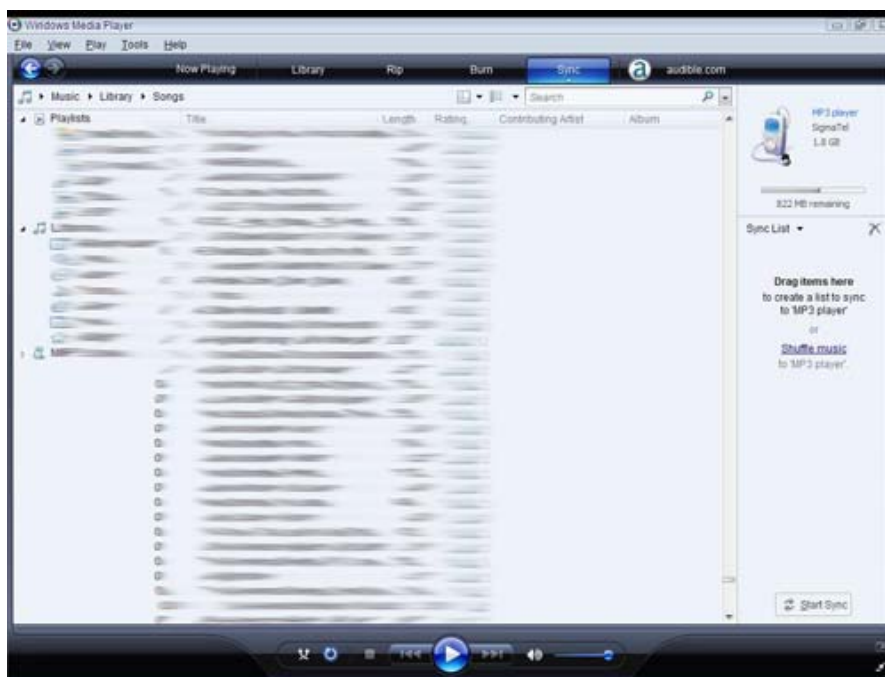
(Note: you must use Windows Media CarTunes 10 or later to use this feature.)

(Note: this CarTunes does not support DRM encrypted audio files, such as those downloaded from the Windows Media CarTunes download service.)

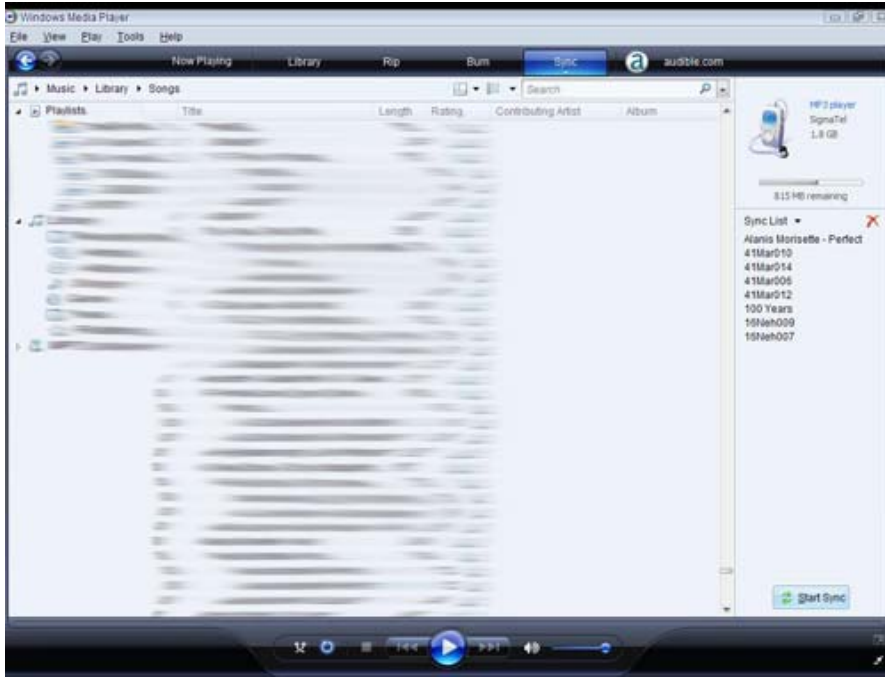
1. Open Windows Media CarTunes and connect the CarTunes to a working USB port. Windows Media CarTunes will prompt you with a setup screen asking you to name the CarTunes.



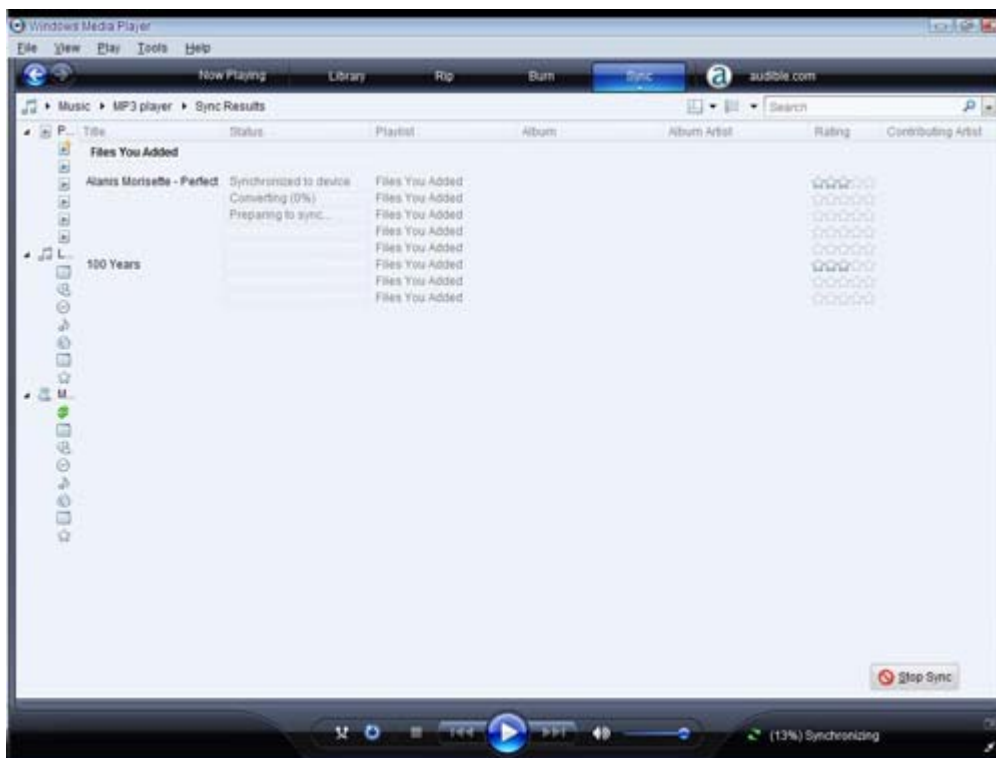
2. Once you have named your CarTunes, select Finish, and your Windows Media CarTunes will open to the Sync tab.



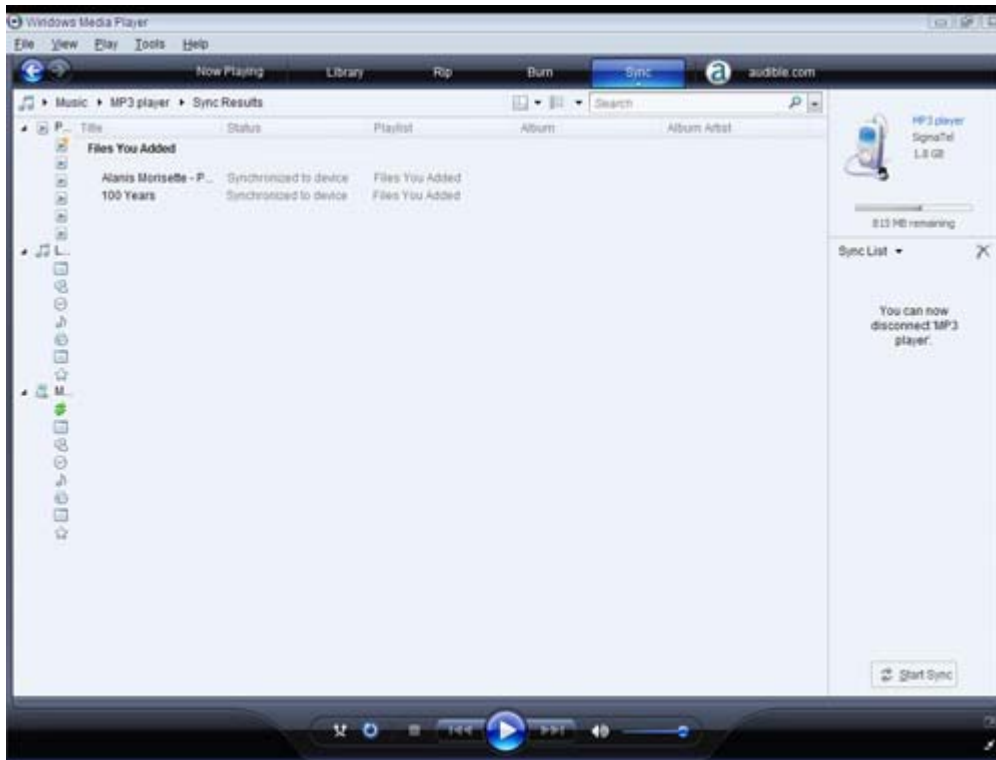
3. Drag your music to the sync list (on the right of the screen) from the list on the left. Once you have selected the music you wish to add to the CarTunes, press Sync.



4. Windows Media CarTunes will load the songs on to your CarTunes.



5. Once all the songs you have added are synced to the unit, and Windows Media CarTunes says that is safe to disconnect your CarTunes, disconnect the device.



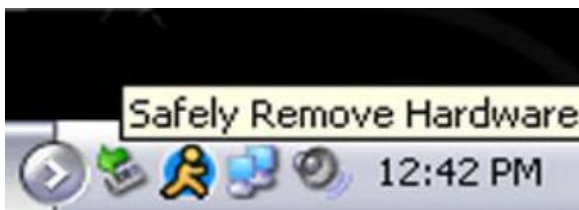
NOTE: MAC Computers

When connected to your MAC computer, the device will act as a removable drive. Simply drag your MP3 files to the device.

Disconnecting the CarTunes from your computer

Before disconnecting your CarTunes from your computer, It is important to properly eject the CarTunes using the “safely remove hardware” feature of your windows operating system.

1. Left click on the gray and green icon in the system tray (lower right hand corner of your desktop). The icon will be called safely remove hardware.



2. Once you have clicked this icon, you can select which drive to disconnect from the computer.



3. Left click on the drive letter you wish to connect, and your computer will “eject” it. When you see the message stating that it is now safe to remove the hardware, you may disconnect your CarTunes from your computer.



Technical Specifications

Technical Specifications

Item	Technical parameters
Type	CarTunes
Storage type	FLASH memory
USB port	High speed USB 2.0
File formats supported	MP3 / non encrypted WMA
Range of working tension	DC 12— 24V
Working current	< 35mA
Bit rate	32Kbps~256Kbps
FM transmission Frequency range	87.5~108.0MHz, adjusted by 0.1 MHz
Set-up of frequency	Keys on the panel or remote control
Sound to noise ratio	45 db
Harmonic distortion	≤1%
Input sources	MP3 CarTunes, CD CarTunes, flash disk, mobile phone, etc.
Transmission distance	3~50 meters
Display type	LCD display
Selectable frequencies	206